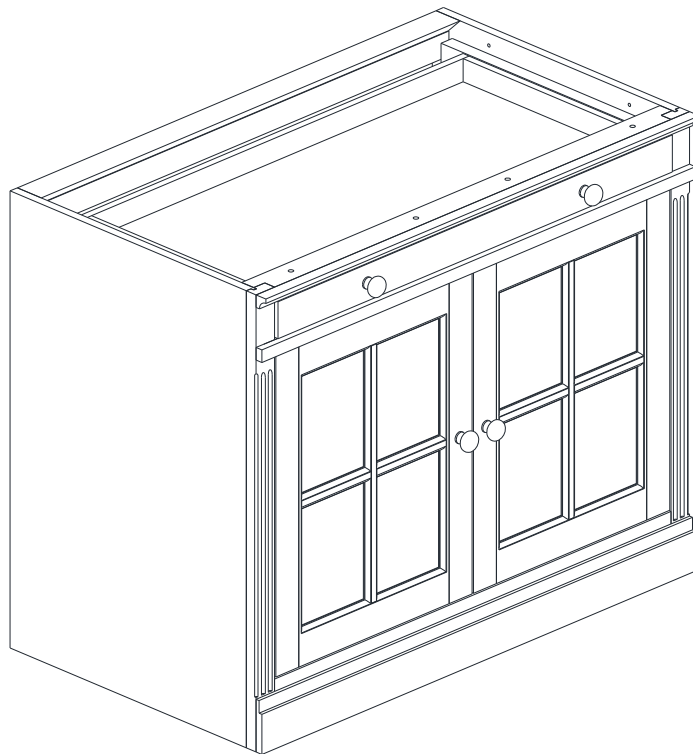


# POTTERYBARN



## LIVINGSTON DOUBLE GLASS CABINET

Date : 30-March-16

Rev :-

[www.potterybarn.com](http://www.potterybarn.com)

**Important Safety Instructions:**

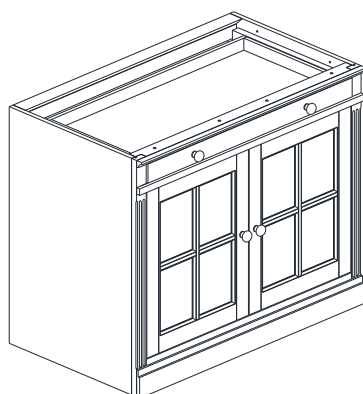
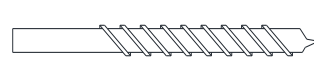
- Please read all instructions carefully before assembling.
- For your safety, assembly by two or more adults is strongly recommended.
- Keep instructions for future use.
- Use only vendor supplied hardware to assemble. Using unauthorized hardware could jeopardize the structural integrity of the item.
- The Livingston Double Glass Door Cabinet is designed for use with Livingston Double Top, Single Glass Door Set.

**Pre-assembly:**

- Remove all parts and hardware from the box and lay out on a clear carpeted or scratch-free work surface, as this will avoid damaging parts during assembly. The shipping box provides an ideal work surface.
- Do not dispose of any packaging or contents of the shipping carton until assembly is completed to avoid accidentally discarding small parts or hardware.
- Use the parts and hardware lists below to identify and separate each of the pieces included.
- The illustrations provided allow for easier assembly when used in conjunction with the assembly instructions.
- The use of power tools to aid in assembly is not recommended. Power tools can damage hardware and split wood.

**Parts Enclosed:**

(A) Livingston Double Glass Cabinet – 1x

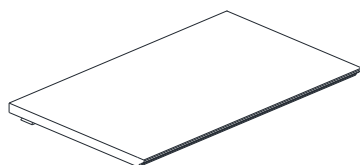
**Hardware Enclosed:**

G. Bolts Connector – 4 set

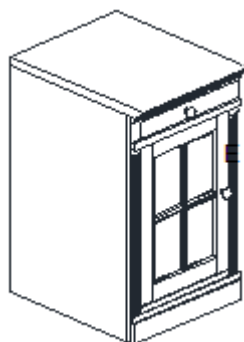
H. Drill Bit – 1x

**Assembly Options:**

(C) Livingston Double Top – 1x



(D) Livingston Single Glass Door and Single Top – 1x



**Note:** To connect the Cabinet with other modular items, Top panel need to be detached from the case.

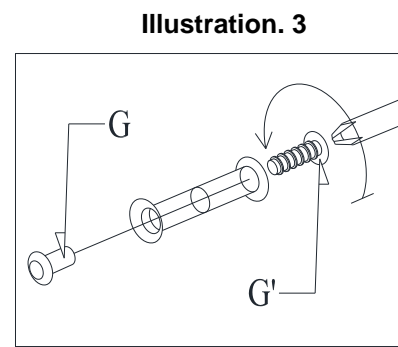
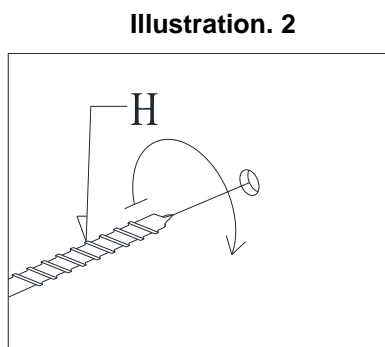
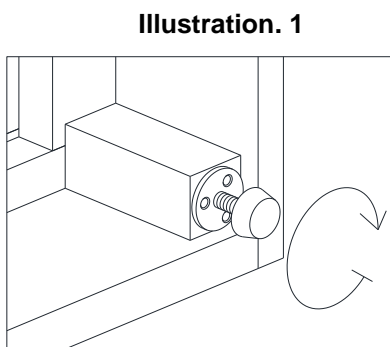
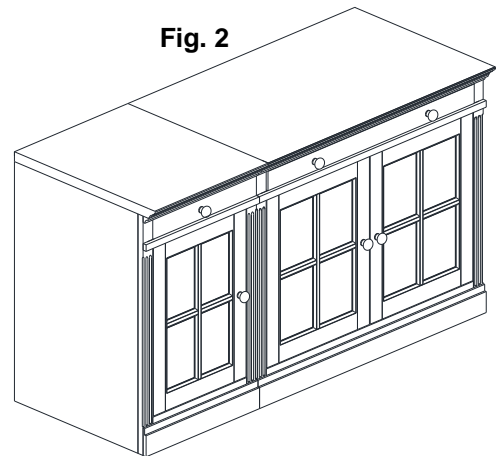
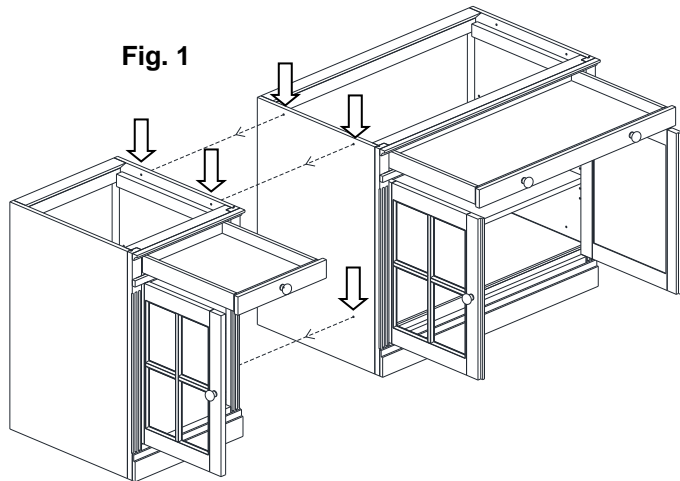
## Assembly Instructions:

### Configuration #1: Livingston Double Glass Door Cabinet (A) and Livingston Double Top (C)

To install the Livingston Double Top (C) with the cabinet, please follow the assembly instruction which is comes with the Livingston Double Top (C).

### Configuration #2: Livingston Double Glass Door Cabinet (A) and Livingston Single Glass Door with Single Top (D)

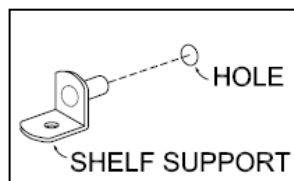
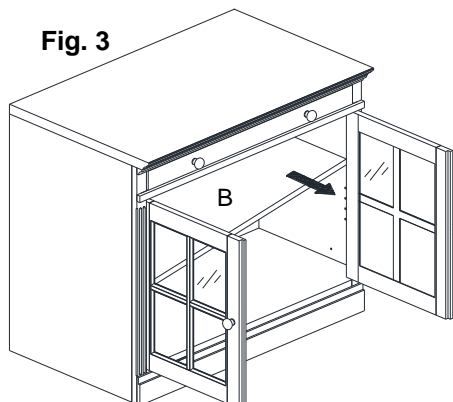
1. Open the upper drawer and doors of the cabinet as shown in **fig. 1**.
2. Use Drill Bit (H) to penetrate the pre-drilled holes on the side panels of the cabinet for inserting Bolts Connector (G) as shown in **fig. 1, illustration. 2**.
3. Insure all items which will be set up together have the same level. If not please adjust the levelers. Found on the bottom of the furniture as shown on **illustration. 1**. Carefully grasp one side of the furniture and elevate it slightly to provide access to levelers. Turn the leveler until adequate contact will be made with the floor. Carefully set the furniture down. Repeat until the furniture sits level and stable.
4. Align the holes and insert the Connector Bolts (G) then tighten with a screwdriver (Not Included) as shown on **illustration. 3**.
5. Attach top panels onto the cabinets following the assembly instructions in the Livingston Single Top and Livingston Double Top as shown in **fig. 2**.



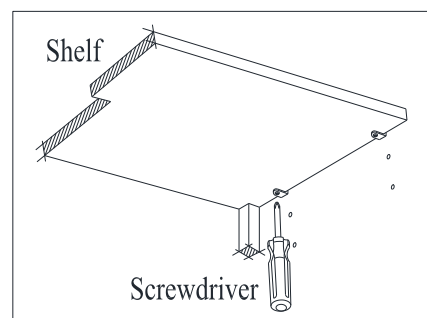
### Remove & Re-Install Adjustable Shelf.

- Release the screws from shelf pins, then carefully lift shelf up and out of the cabinet.
- Put the shelf into the cabinet by inserting the shelf "diagonally". Place adjustable shelf onto the shelf pins and reinstall screws as shown on **fig. 3, illustration 3**.
- Make sure the shelf is stable.

**Fig. 3**



**Illustration. 3**



### Care Instructions:

- Dust often using a clean, soft, dry and lint-free cloth.
- Blot spills immediately and wipe with a clean, damp, cloth.
- We do not recommend the use of chemical cleansers, abrasives or furniture polish on our lacquered finish.