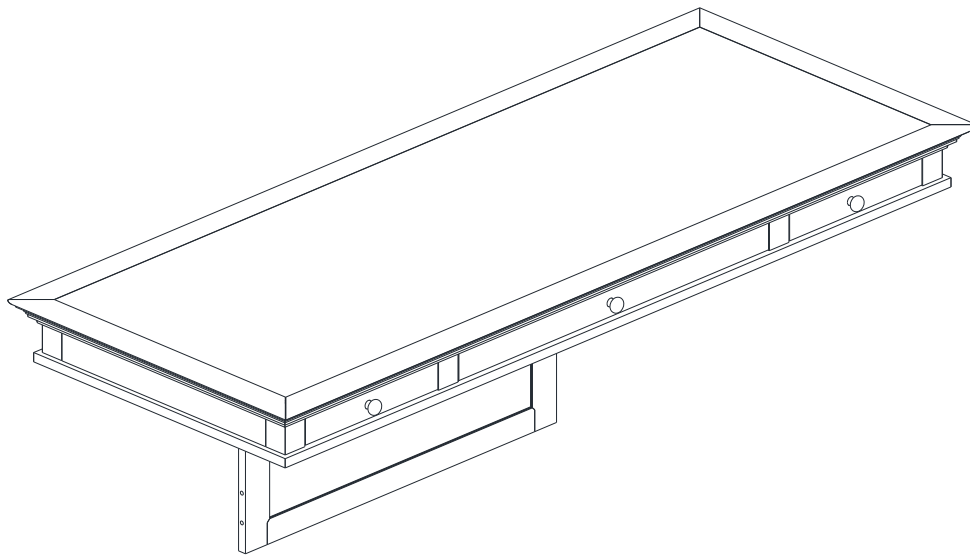


# POTTERY BARN



## LIVINGSTON LARGE DESK TOP

Date : 16-March-16

Rev :-

[www.potterybarn.com](http://www.potterybarn.com)

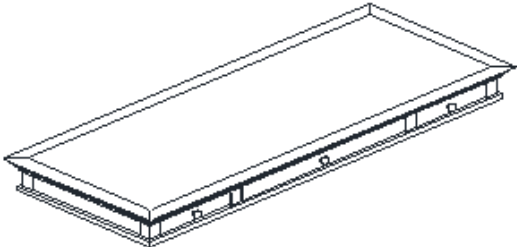
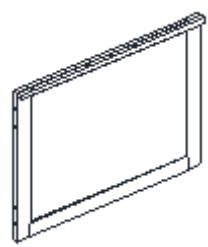
**Important Safety Instructions:**

- Please read all instructions carefully before assembling.
- For your safety, assembly by two or more adults is strongly recommended.
- Keep instructions for future use.
- Use only vendor supplied hardware to assemble. Using unauthorized hardware could jeopardize the structural integrity of the item.
- The Livingston Large Desk Top is designed for use with Livingston Left Pedestal & Right Pedestal.

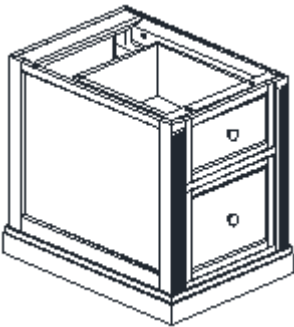
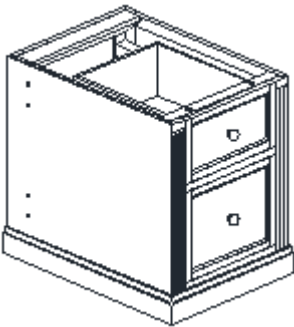
**Pre-assembly:**

- Remove all parts and hardware from the box and lay out on a clear carpeted or scratch-free work surface, as this will avoid damaging parts during assembly. The shipping box provides an ideal work surface.
- Do not dispose of any packaging or contents of the shipping carton until assembly is completed to avoid accidentally discarding small parts or hardware.
- Use the parts and hardware lists below to identify and separate each of the pieces included.
- The illustrations provided allow for easier assembly when used in conjunction with the assembly instructions.
- The use of power tools to aid in assembly is not recommended. Power tools can damage hardware and split wood.

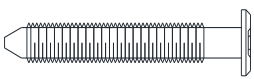

**Parts Enclosed:**

(A) Top Panel – 1x	(B) Back Panel – 1x
	

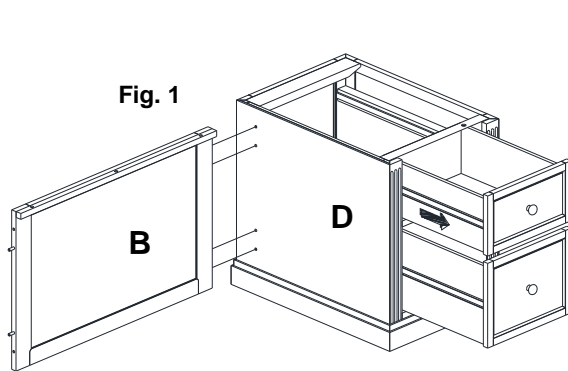
**Needed for Assembly:**

(C) Livingston Left Pedestal	(D) Livingston Right Pedestal
	

**Hardware Enclosed:**

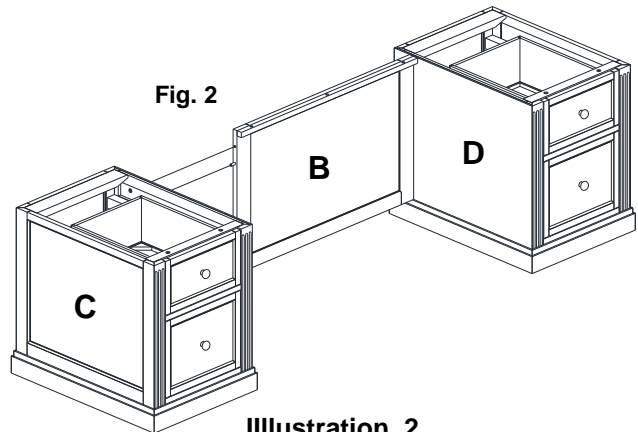
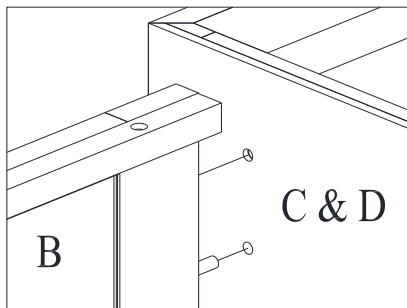
	
E. Allen Bolts 1/4" x 1 1/4" – 11x	F. Allen Key M4 – 1x

1. Attach the Back Panel (B) to the Left and Right Pedestals (C and D) by inserting dowels on the Back Panel (B) to the holes on the Pedestals (C and D) as shown in **fig. 1, illustration. 1**.
2. Extend the drawers of the pedestal, insert the Allen Bolts (E) through the holes on the side panel of the pedestal into the inserts on the Back Panel (B), then tighten with the Allen Key (F) as shown in **fig. 2 illustrations. 2**.



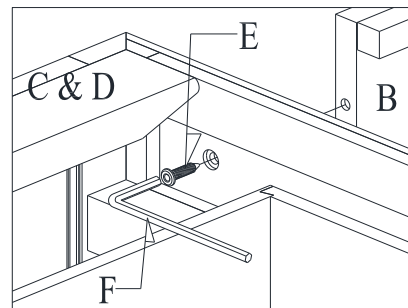
**Fig. 1**

**Illustration.1**

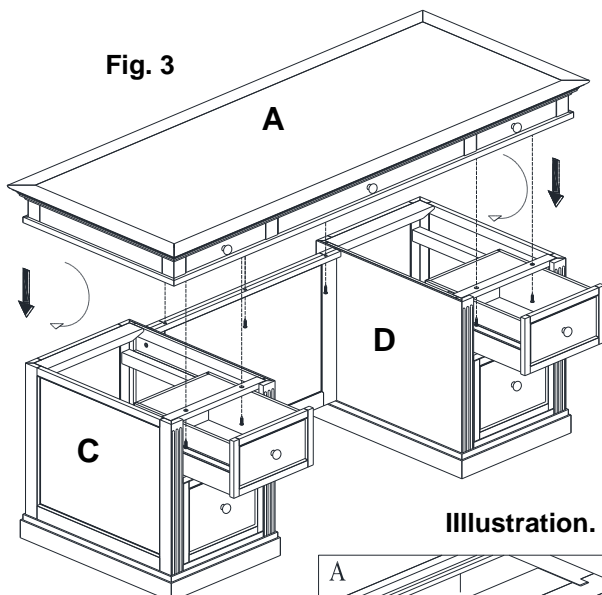


**Fig. 2**

**Illustration. 2**

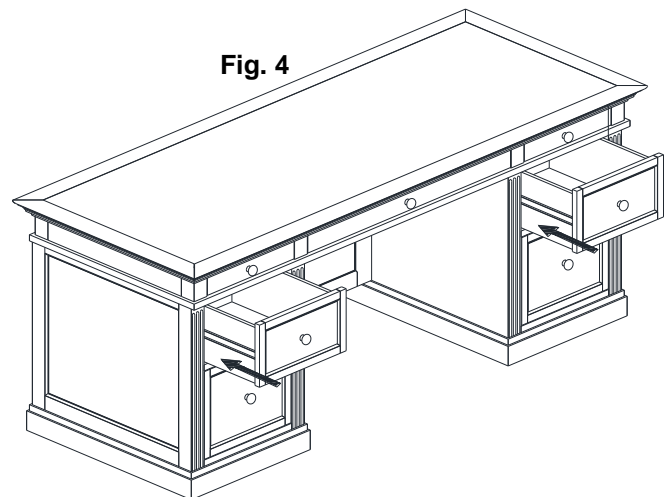
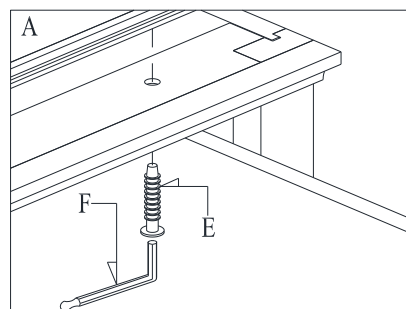


3. Attach Top Panel (A) to the base assembly by inserting the Allen Bolts (E) through the holes on the top of the Pedestals (C and D) and the cleat of the Back Panel (B) into the inserts on the Top Panel (A). Tighten with the Allen Key (F) as shown in **fig. 3 illustration. 3**.
4. Close the drawers back to their previous positions as shown in **fig. 4**.



**Fig. 3**

**Illustration. 3**

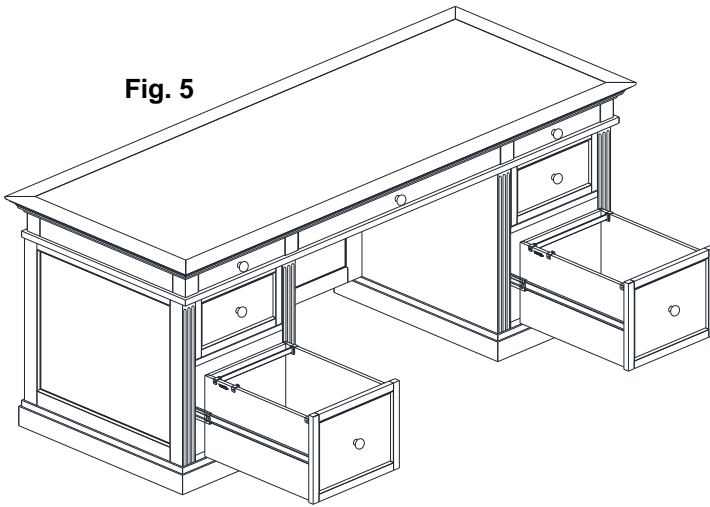


**Fig. 4**

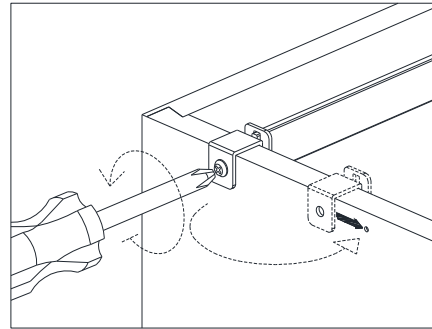
5. The file bars attached inside the drawer case in legal sized.

If it use for letter sized files, release the screws pre-attached on the drawer box to remove the metal holders. Place the metal holders to other pre-drilled holes provided and insert the screws into the hole, then tighten with screwdriver as shown in **fig. 5, illustration. 4 & 5.**

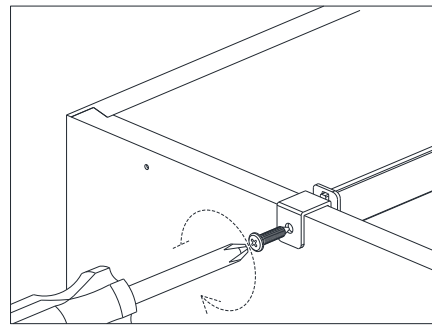
**Fig. 5**



**Illustration. 4**



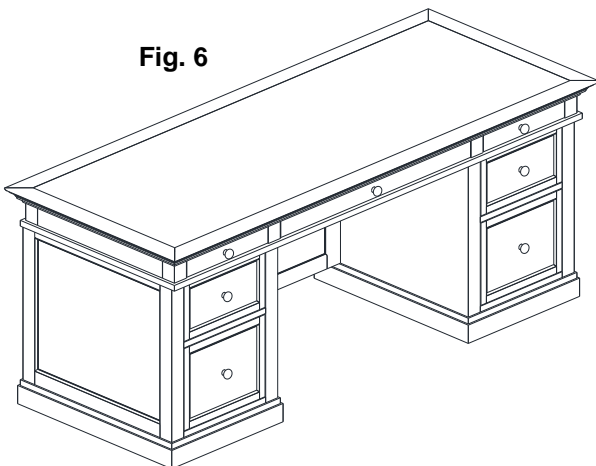
**Illustration. 5**



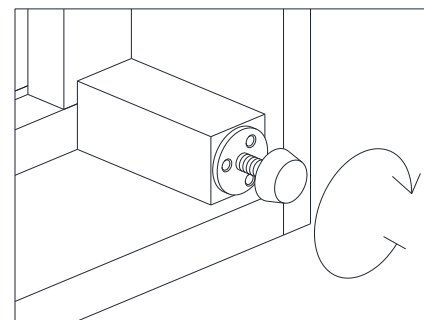
6. If the floor is uneven adjust the recessed levelers found on the bottom of the furniture.

- Carefully grasp one side of the furniture and elevate it slightly to provide access to levelers.
- Turn the leveler until adequate contact will be made with the floor.
- Carefully set the furniture down.
- Repeat until the furniture sits level and stable.

**Fig. 6**



**Illustration. 6**



**Care Instructions:**

- Dust often using a clean, soft, dry and lint-free cloth.
- Blot spills immediately and wipe with a clean, damp, cloth.
- We do not recommend the use of chemical cleansers, abrasives or furniture polish on our lacquered finish.