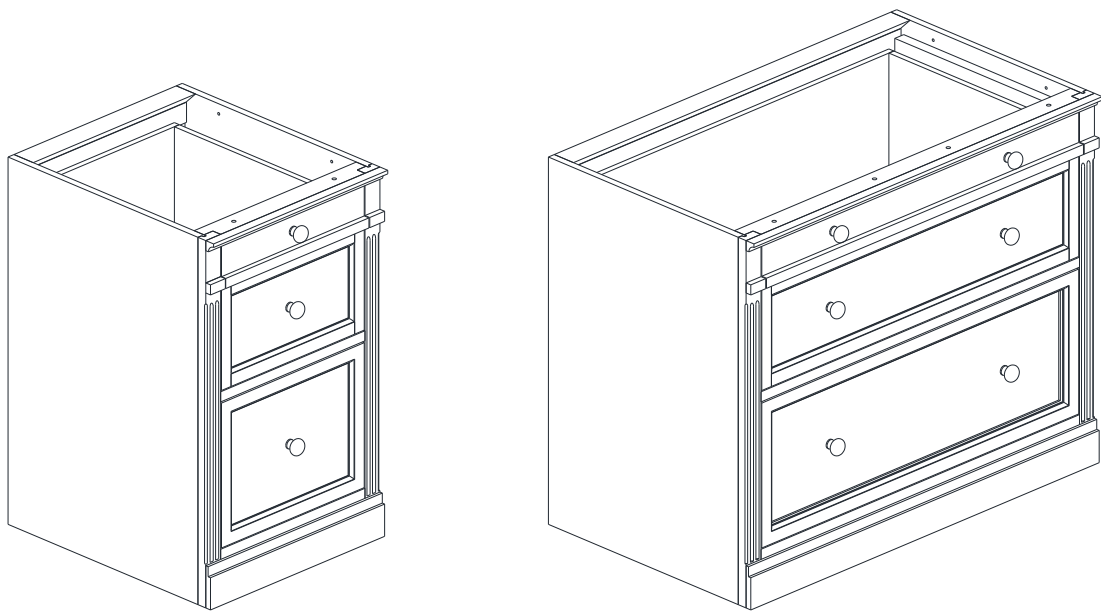


POTTERY BARN



LIVINGSTON SINGLE DRAWER PEDESTAL LIVINGSTON DOUBLE LATERAL FILE

Date : 30-March-16

Rev :-

www.potterybarn.com

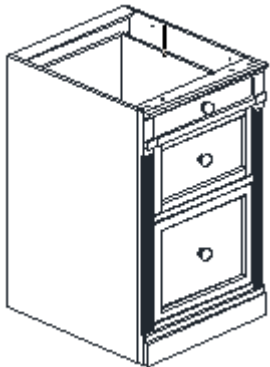
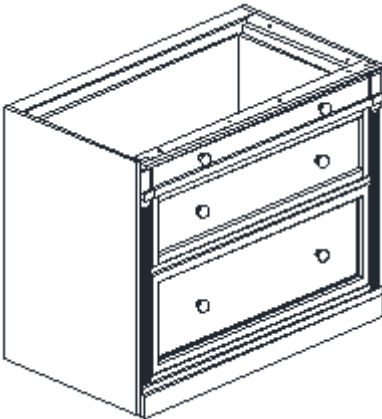
Important Safety Instructions:

- Please read all instructions carefully before assembling.
- For your safety, assembly by two or more adults is strongly recommended.
- Keep instructions for future use.
- Use only vendor supplied hardware to assemble. Using unauthorized hardware could jeopardize the structural integrity of the item.
- The Livingston Single Drawer Pedestal, Double Lateral File is designed for use with Livingston Single Top, Single Glass Door and Double Glass Door Cabinet.

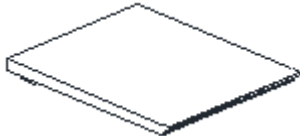
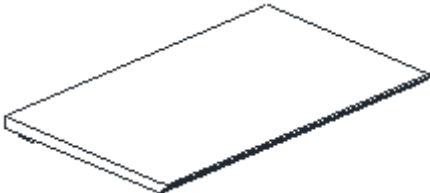
Pre-assembly:

- Remove all parts and hardware from the box and lay out on a clear carpeted or scratch-free work surface, as this will avoid damaging parts during assembly. The shipping box provides an ideal work surface.
- Do not dispose of any packaging or contents of the shipping carton until assembly is completed to avoid accidentally discarding small parts or hardware.
- Use the parts and hardware lists below to identify and separate each of the pieces included.
- The illustrations provided allow for easier assembly when used in conjunction with the assembly instructions.
- The use of power tools to aid in assembly is not recommended. Power tools can damage hardware and split wood.



Parts Enclosed:

(A) Livingston Single Drawer Pedestal – 1x	(B) Livingston Double Lateral File – 1x
	

Needed for Assembly (sold separately):

(C) Livingston Single Top – 1x	(D) Livingston Double Top – 1x
	

Hardware Enclosed:

	
G. Bolts Connector – 4 Set	H. Drilling – 1x

Note: To connect the Cabinet with other modular items, Top need to be detach from the case.

Assembly Instructions:

Configuration #1: Livingston Single Drawer Pedestal (A) or Double Lateral File (B) and Livingston Single Top (C) or Double Top (D).

To install the Livingston Drawer Pedestal (A) or Double Lateral File (B) with the Tops (C and D), please follow the assembly instruction which is come with the Livingston Single or Double Top (C and D).

Configuration #2: Livingston Single Drawer Pedestal with Single Top (C) and Livingston Double Lateral File with Double Top (D)

1. Open the upper drawer of the cabinet, push the fin of the Anti-Tip Interlock pre-attached on the cabinet as shown in **fig. 1, illustration. 1**, then open the lower drawer as shown in **fig. 2**.
2. Use Drill Bit (H) to penetrate the pre-drilled holes on the side panels of the cabinet for inserting Bolts Connector (G) as shown in **fig. 2, illustration 2**.
3. Insure all items which will be set up together have the same level. If not please adjust the levelers found on the bottom of the furniture as shown in **illustration. 3**. Carefully grasp one side of the furniture and elevate it slightly to provide access to levelers. Turn the leveler until adequate contact will be made with the floor. Carefully set the furniture down. Repeat until the furniture sits level and stable.

Fig. 1

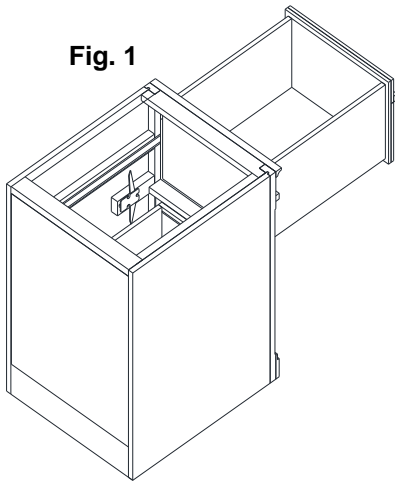


Illustration. 1

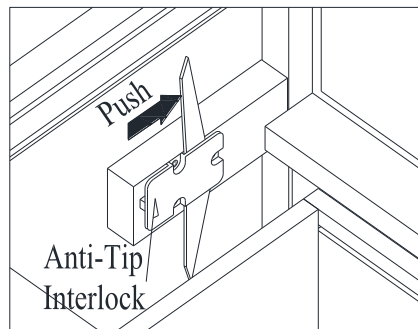


Fig. 2

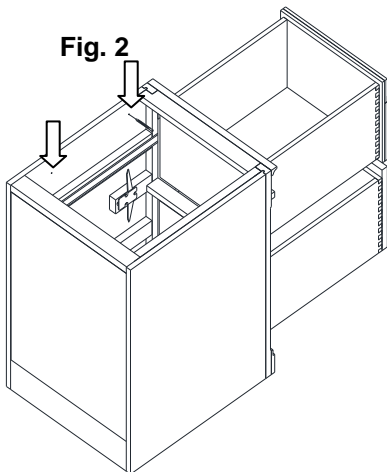


Illustration. 2

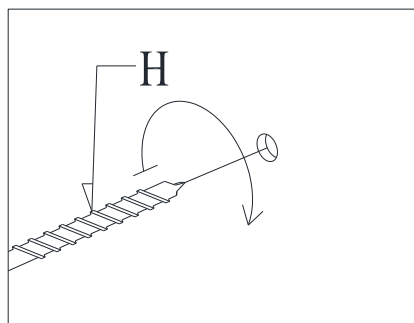
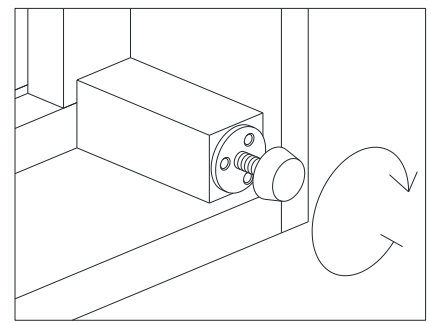


Illustration. 3



4. Align the holes and insert the connector bolts (G & G') then tighten with a screwdriver (Not Included) as shown in **fig. 4, illustration. 4**.

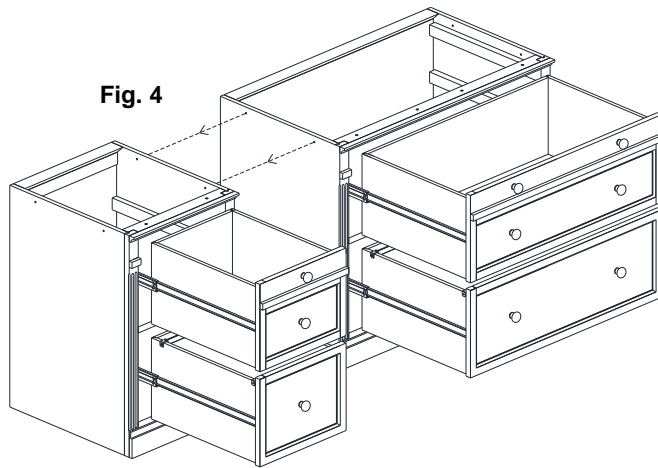
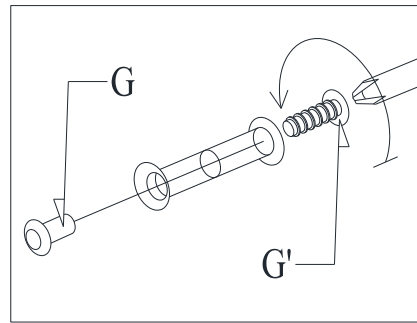


Illustration. 4



5. Attach top panel onto the cabinets (Single Drawer Pedestal/Double Lateral File) following the assembly instruction of the Livingston Single Top / Livingston Double Top as shown in **fig. 5**.
6. The file bars in the drawer-file have been installed for legal sized files.
7. If use the letter sized files, release screws pre-attached on the sides of drawer box to remove the metal holders. Position the metal holders to other pre-drilled holes provided on the sides of drawer box and insert the screws into the pre-drilled holes, tighten with screwdriver as shown in **fig. 6, illustration 4 & 5**.

Fig. 5

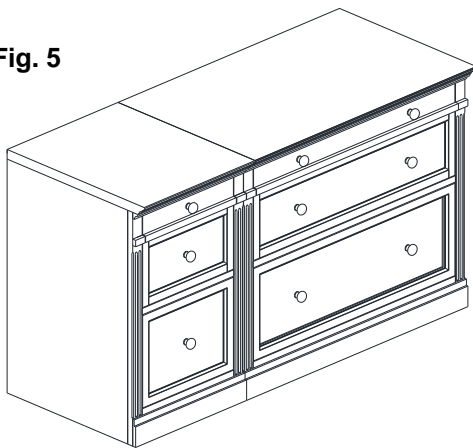


Fig. 6

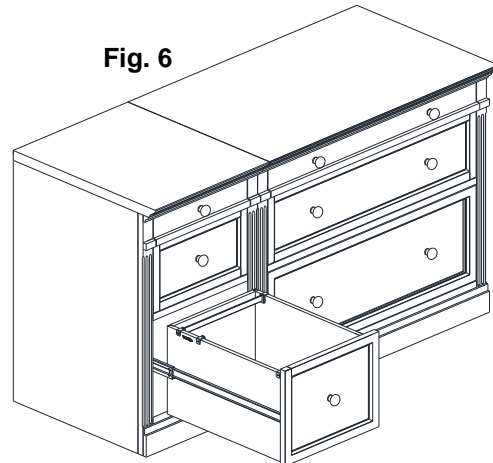


Illustration. 4

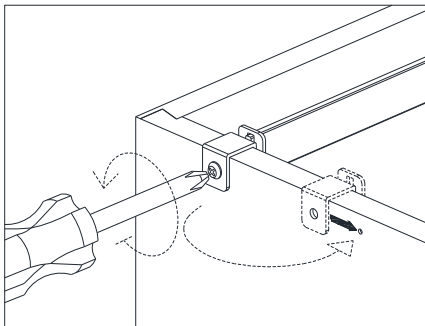
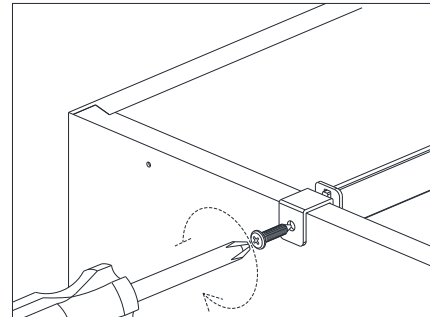


Illustration. 5



Care Instructions:

- Dust often using a clean, soft, dry and lint-free cloth.
- Blot spills immediately and wipe with a clean, damp, cloth.
- We do not recommend the use of chemical cleansers, abrasives or furniture polish on our lacquered finish.