

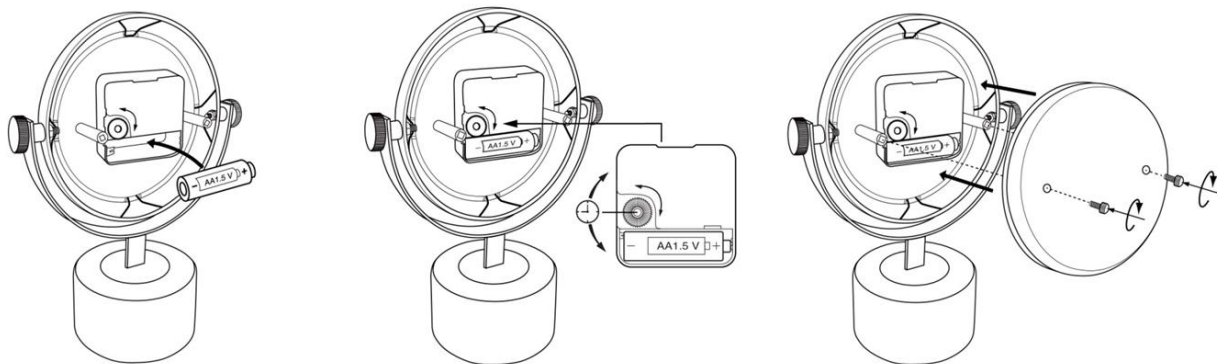
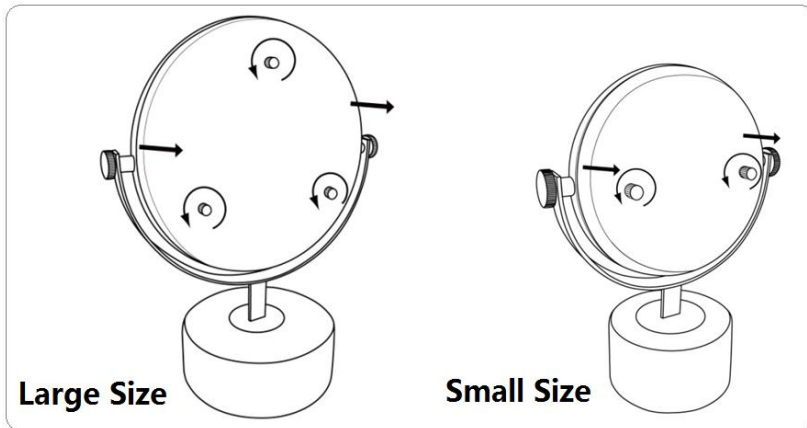
P O T T E R Y B A R N

Caruso Clock OPERATING INSTRUCTIONS

This clock is available in two sizes and the following instructions apply to both styles.

INSTRUCTIONS

1. Open the cover of the clock – remove the thumb screws and then the back cover to access the battery compartment.
Battery Installation:
2. Insert ONE new AA 1.5V battery (not included) into the battery compartment, matching the battery terminals to the polarity markings (+ / -) displayed inside the compartment. The movement should start immediately.
Setting the Time:
3. The Time Set dial is located near the battery compartment. Turn the Time Set dial in the direction indicated by the arrow until correct time is reached.
4. Re-attach the back cover of the clock using the thumb screws.



Battery Safety Information:

Do not use rechargeable batteries to power this clock. Do not try to recharge non-rechargeable batteries. Never short circuit batteries. Spent batteries must be removed from the clock promptly. To avoid explosion or leakage, do not dispose of battery in a fire or attempt to recharge standard or alkaline battery. Please dispose of battery safely according to the battery manufacturers' instructions or recycle battery per state and local codes. If battery leakage occurs and any such leaked material comes in contact with the skin or eyes, wash immediately with plenty of water. Battery should be handled under adult supervision. If this clock is not to be used for a long period of time, remove the battery to prevent injury or product damage caused by possible battery leakage.

CARE INSTRUCTIONS: Clean clock with a soft, dry cloth. Do not use solvents or abrasive cleaners on clock as they may damage the lacquered finish.

Thank you for your purchase!
stores | catalog | www.potterybarn.com