

# POTTERY BARN

## Daniella Chest

### *Pre-Assembly:*

- Please read all instructions carefully before beginning assembly.
- For your safety and convenience, assembly by two people is required.

### **Parts Included:**

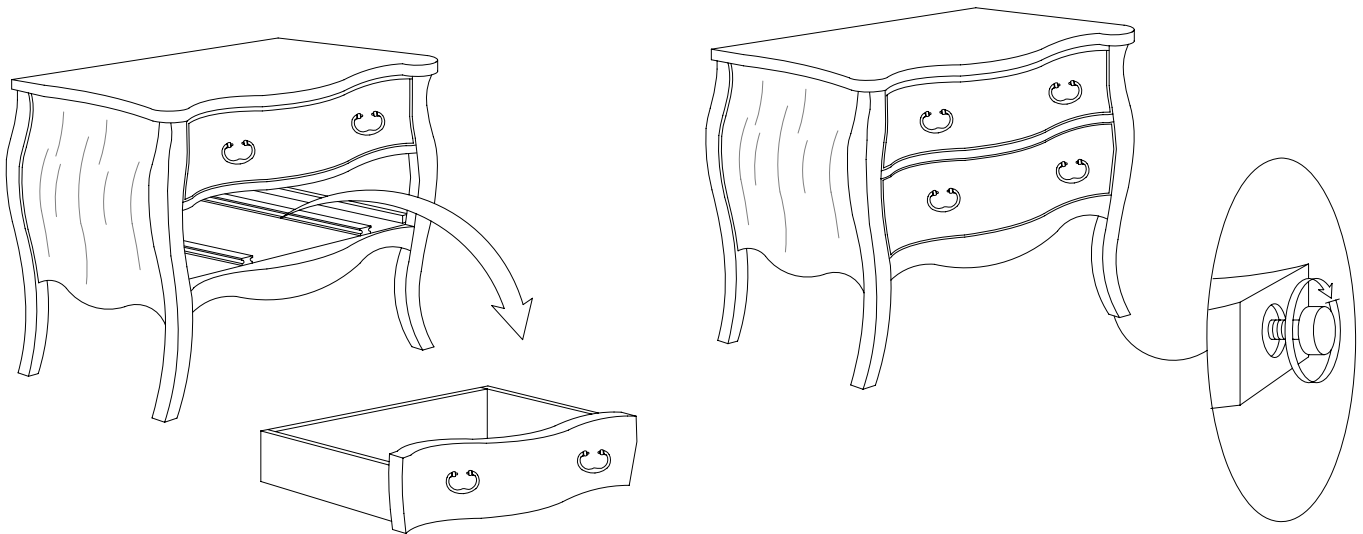
- (1) Daniella Chest with two drawers

### **To Remove Drawer:**

- Grasp the drawer front.
- Firmly pull the drawer straight-out which will release the drawer stop.
- Re-insert drawer by firmly pushing the drawer over the stop and back into place.

### **To Adjust Levelers:**

- If the floor is uneven the Daniella chest may not sit properly. Recessed levelers are located under each of the chest's legs and can be adjusted to allow the table to sit evenly.
  - Carefully grasp one side of the chest. Elevate it slightly to provide access to levelers.
  - Turn the levelers until adequate contact is made with the floor.
  - Carefully set the chest down.
  - Repeat until the chest is level and stable.



### *Care Instructions:*

- Wipe with a clean, soft cloth.
- Avoid the use of all abrasive cleaners.

thank you for your purchase

stores /catalog /www. potterybarn.com