

**Pre-assembly:** Before beginning installation, use the parts list to identify each of the components included.

**Care:** Clean faucet with soapy water and a soft cloth or sponge. Rinse thoroughly with water. Wipe dry. Drying immediately after use helps prevent lime deposits from forming. To protect the finish, do not use abrasive agents or harsh cleansers. If using a cleaning agent, it is best to first test on a small inconspicuous spot before applying solution to entire faucet.

**thank you for your purchase**

# POTTERYBARN

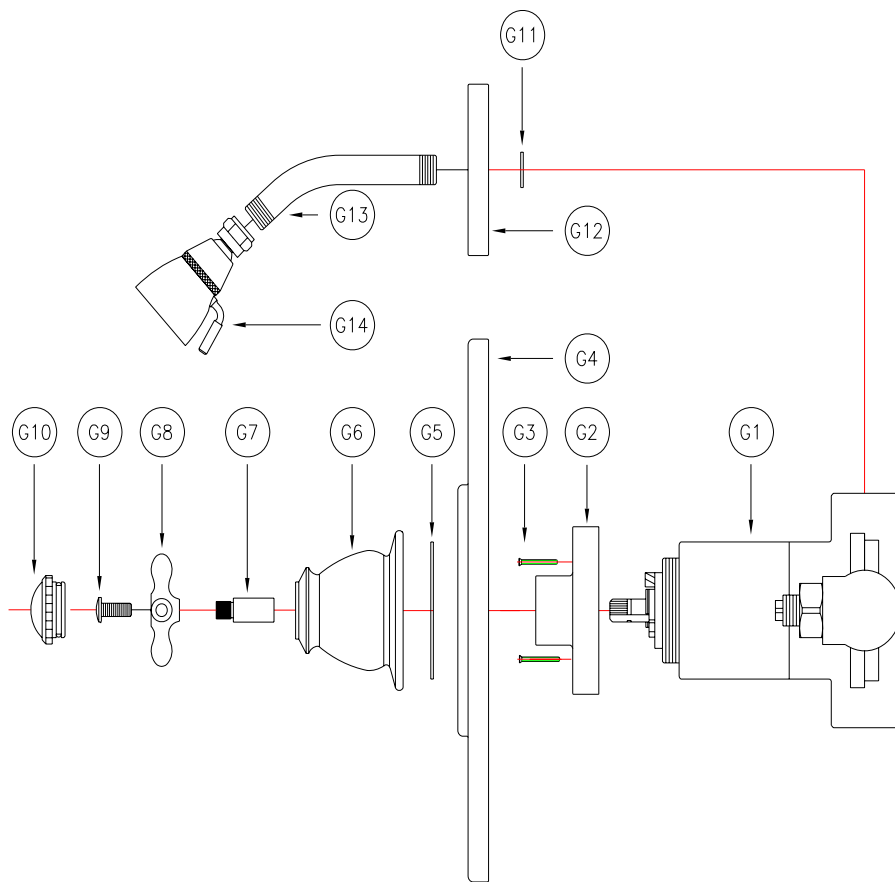
## Gooseneck Pressure Balance Shower Faucet Installation Instructions Model # MT-28C

### Professional Installation Required

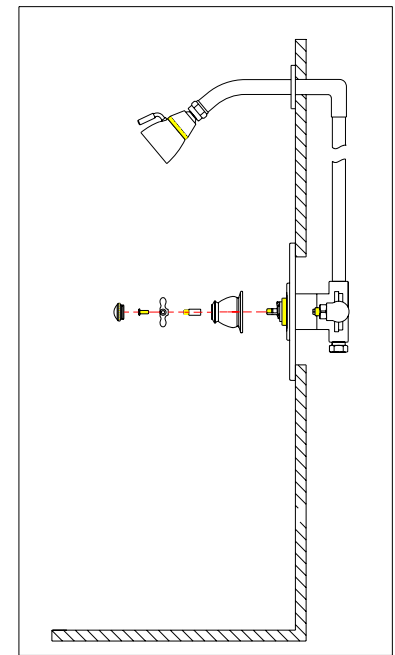
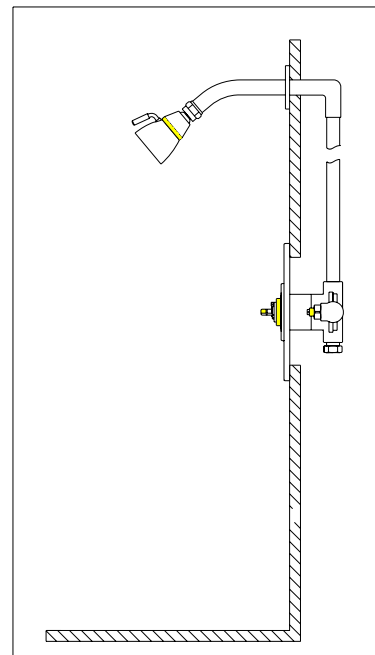
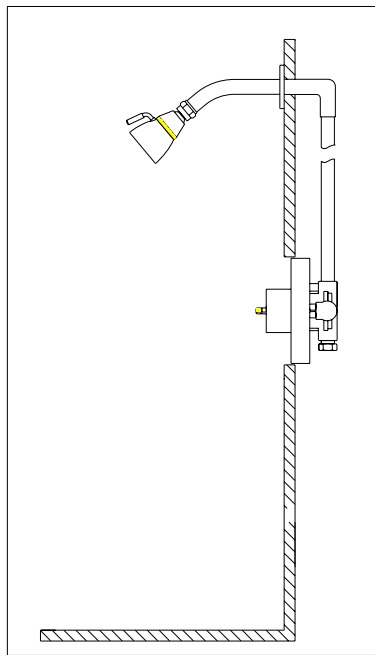
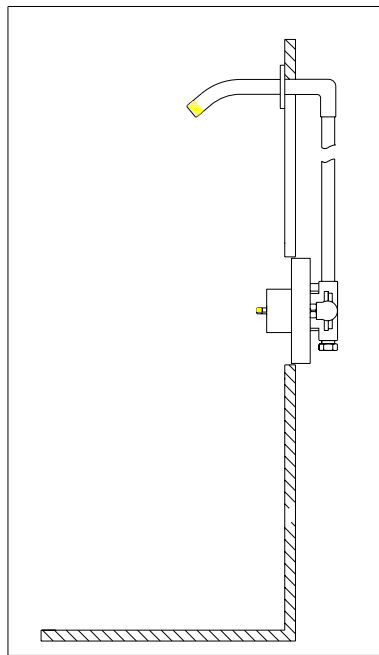
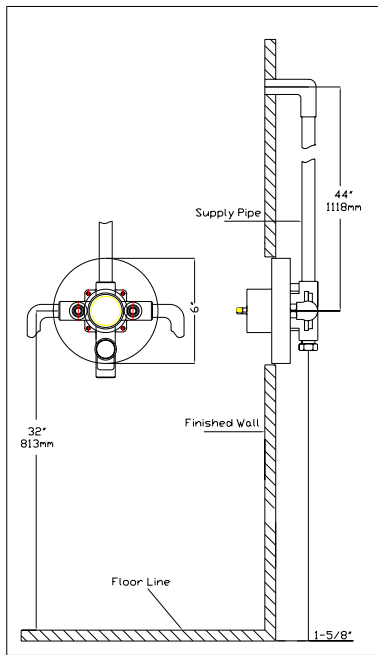
Important Safety Instructions:

- **Please read all instructions carefully and completely before beginning installation.**
- Remove all parts and hardware from the box and lay out on a clear workspace, along with any plastic protective packaging.
- Do not dispose of any packaging or contents until assembly is complete to avoid accidentally discarding small parts or hardware.

Flow Rates: Minimum 2.4 GPM



PARTS LIST		
NO.	DESCRIPTION	Q'TY
G1	VALVE	1
G2	PLASTIC PLATE	1
G3	PLASTIC PLATE SCREW	2
G4	FACE PLATE	1
G5	PLATE O-RING	1
G6	HANDLE BASE	1
G7	STEM EXTENSION	1
G8	CROSS HANDLE	1
G9	HANDEL SCREW	1
G10	END CAP	1
G11	O-RING	NOT INCLUDED
G12	FLANGE	NOT INCLUDED
G13	SHOWER ARM	NOT INCLUDED
G14	SHOWERHEAD	NOT INCLUDED



Install valve (G1), making sure 'up' outlet is facing up.

Use a 1/2" plug to close bottom opening valve.

Connect water supplies to valve (G1). Hot water to left side and cold water to right side. Use compound or Teflon tape on all threaded connections.

Valve (G1) rough-in is 1-5/8" ± 1/2" from centerline of supplies to face of finish wall.

Plastic plate (G2) on valve is flush with finished wall.

Slip the O-ring (G11) and flange (G12) onto the shower arm (G13). Connect shower arm (G13) to the supply pipe.

Do not attach showerhead (G14) to shower arm (G13) until after you have flushed the system. After all connections are made: Test and flush the system.

Turn on the water and check connections for any leaks. Place handle on the valve stem and flush lines by running hot and cold water uninterrupted for one minute. Remove handle.

Turn off the water and connect the showerhead (G14).

Unscrew the plastic plate screws (G3) on the plastic plate (G2). Remove the plastic plate (G2).

Position the face plate (G4) onto the valve (G1) body.

Screw handle base (G6) into the valve (G1) stem.

Attach stem extension (G7) and cross handle (G8).

Tighten handle screw (G9) to stem. Insert end cap (G10).