

POTTERY BARN

Hudson Side Cabinet 08 Mahogany Assembly Instruction

Pre-assembly:

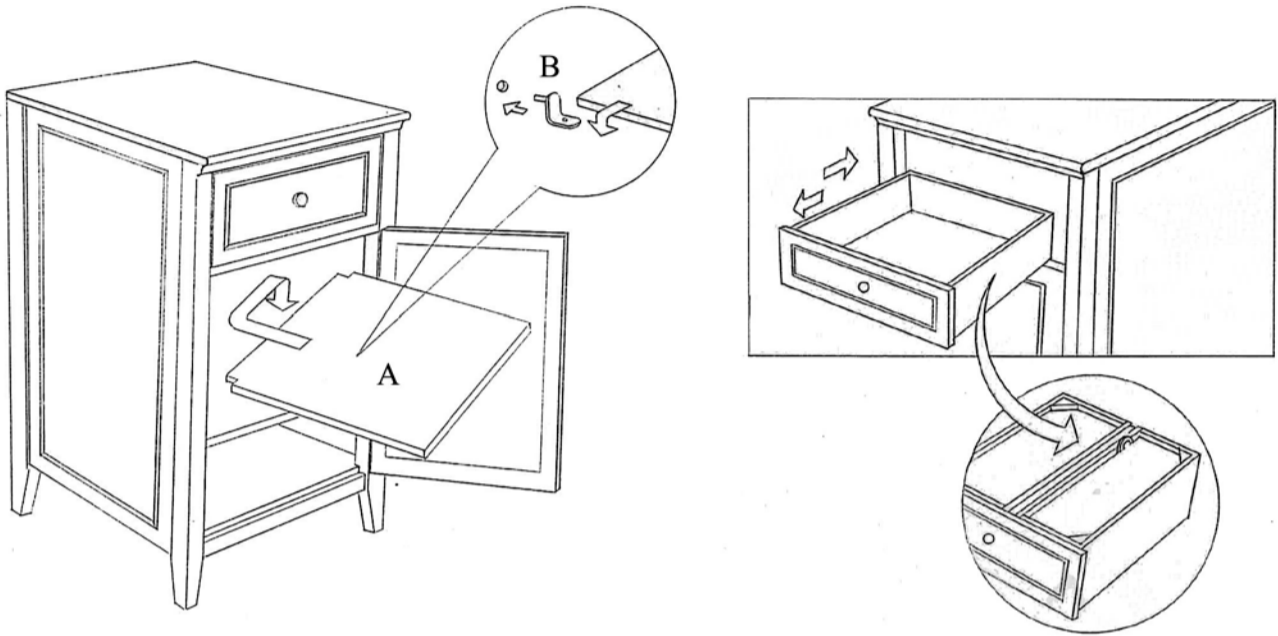
- Please read all instructions carefully before assembly.
- For your safety and ease, assembly by two people is recommended
- Carefully lay out and identify all parts and hardware prior to assembly.
- Save all packing materials until assembly is complete to avoid accidentally discarding small parts or hardware

Parts Included:

- (2) Shelves (A)

Hardware Enclosed:

- (8) Shelf Pins (B)



Assembly Instructions:

1. Remove shelf pins from the hardware packet. Determine the desired height for the shelves using corresponding holes on the interior of the Side Cabinet as a guide. Push the pins onto the pre-drilled holes until fully inserted. Place the shelf onto the pins making sure they are stable.
2. Assembly is complete.

Removing Drawer:

1. Use the drawer pull to partially open the drawer.
2. Grasp the drawer on both sides and pull it straight out to release the drawer stop.

Care Instructions:

- For daily cleaning, dust with a dry, soft cloth.
- Always avoid the use of chemical and abrasive cleaners.

Thank you for your purchase
Stores | catalog | www.potterybarn.com