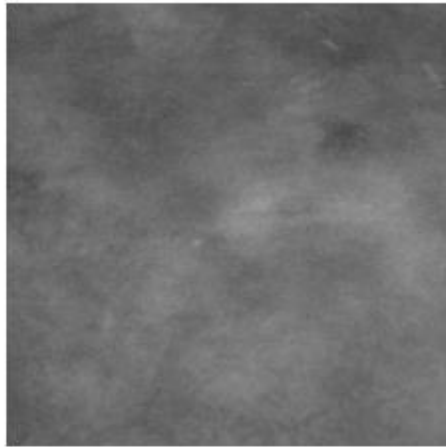


Abbott Outdoor Collection – Concrete Tops



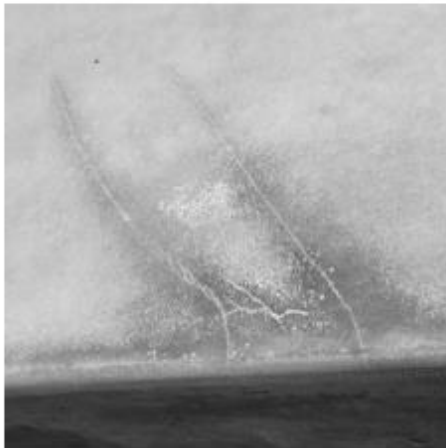
Water spots, fading and color swirls are a natural component of the concrete curing process.



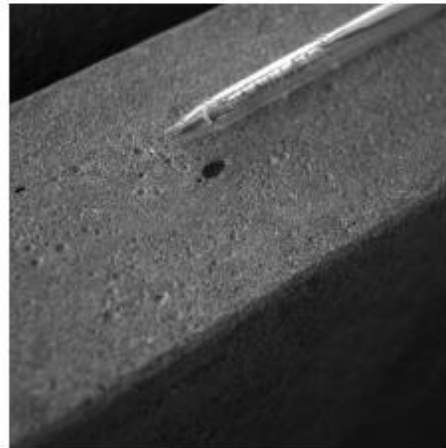
Natural open pores will appear.



Avoid accidentally hitting the table's top edges as this can cause small chips.



Non-structural hairline cracks can appear due to age and exposure to elements; these do not affect the integrity of furniture.



Bubbles in concrete may be hidden below the surface and appear over time.



Seams and mold impressions create color variations.

Abbott Outdoor Collection – Concrete Tops Weathering over time



Concrete Tops weathering features

Created from a composite of stone/cement and fiberglass, our furniture is highly durable but not indestructible.

Outdoor furniture, being used in all weather conditions, naturally tends to become worn over time.

As a natural product, the concrete that makes up our table tops will gradually develop cracks and fine lines, which do not affect the integrity of the furniture.

In addition, the colors of the cement will fade as the months pass, exposing color variations on the whole surface of the top.

Finally, bubbles hidden under the surface of the edges can appear after a long period of use.

Thus, one should be comfortable with all these natural aesthetic features that develop progressively, as shown on the pictures above.

Features

The rugged, casual look of concrete provides a perfect backdrop for outdoor entertaining.

Molded and layered to make a strong surface, an extended 'curing process' gives each top its own unique, beautiful characteristics including textures, color variations and air bubbles.

As a natural product, concrete can and will develop cracks and fine lines, which do not affect the integrity of the furniture. Thus, one should be comfortable with these naturally occurring aesthetics as they develop over time.

Created from a composite of stone/cement and fiberglass, furniture is highly durable but not indestructible.

A light application of a quality furniture wax is a good cleaning agent and protects the finish concurrently.

Care instructions

Cover outdoor furniture when not in use; ensure furniture is completely dry before covering.

To clean, use only a soft, very slightly damp cloth.

Never use abrasive pads, vinegar, bleach, alcohol, household cleaners, turpentine or mineral spirits.

Prevent contact with acidic materials such as citrus or olive oil, which can damage the sealant.

Avoid accidentally hitting the tabletop's edges, as this can cause small chips; to prevent scratches, do not place or drag coarse objects across the surface; do not place extremely hot items directly onto the tabletop, as this can cause sealant discoloration.