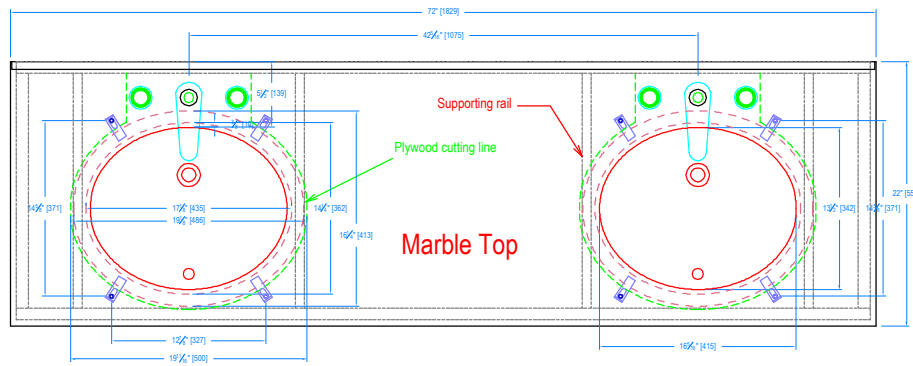
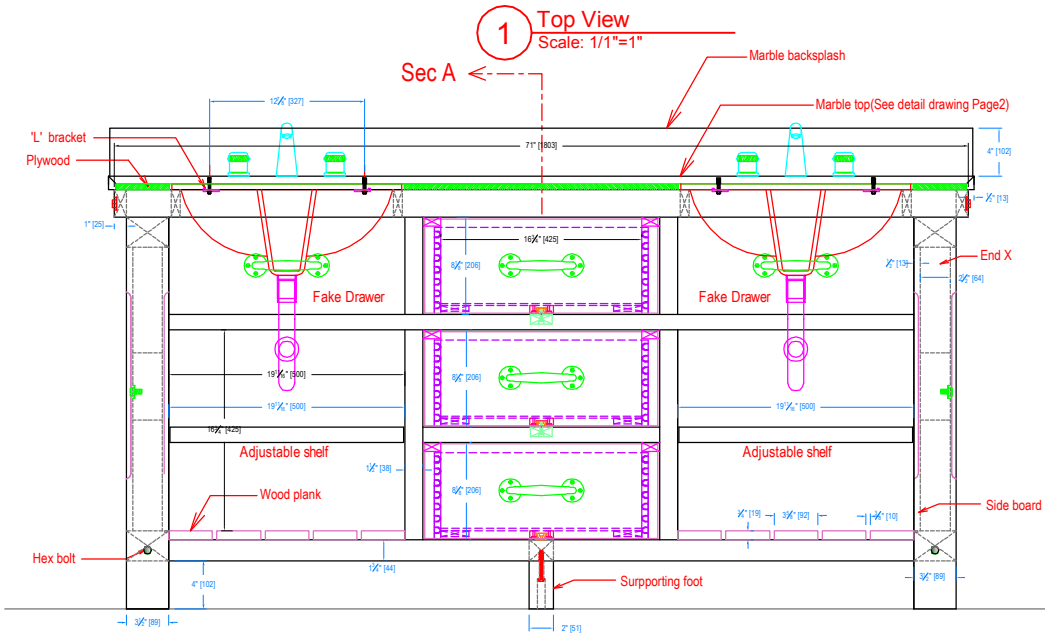


# Benchwright Console with Double sink



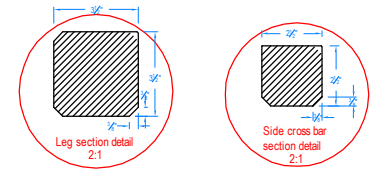
**1 Top View**  
Scale: 1/1"=1"



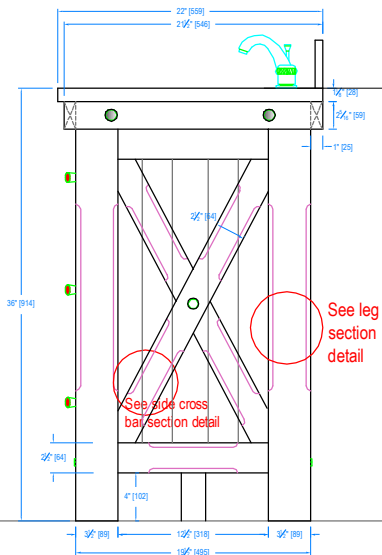
**2 Front View**  
Scale: 1/1"=1"

- Revision R1 2011-05-21**  
 1. Add supporting rail for supporting sink  
 2. Resize for sink-hole on marble top
- Revision R2 2011-06-13**  
 1. Reposition sink to have the sink placement center to side faux drawers
- Revision R3 2011-10-17**  
 Rename to Benchwright Console with Double Sink
- Revision R-4 2011-10-21**  
 1.increase top thickness to 30mm from 19mm, keep overall height the same.
- Revision R-5 2011.10.22**  
 1.reduce marble top thickness to 28mm.

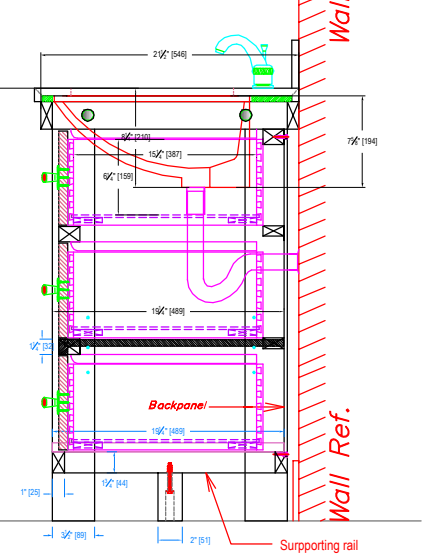
- Revision R6 2011.11.11**  
 1. Add marble backsplash on marble top
- Revision R7 2011.12.15**  
 1. Reduce thickness of side panel to 1/2" thick  
 2. Reduce thickness of shelf support to 1" thick  
 3. Remove metal towel bars.  
 4. Increase depth of base to 21.5" from 21" so the wooden rail under the marble top can meet the wall when installed.
- Revision-8 (2012.1.06)**  
 1. Remove middle adj.shelf and add 2 additional drawers in the middle
- Revision-9 (2012.2.27)**  
 1. Make the gap distance between sink and plywood underneath of marble top is 5mm wide all around the edge of sink



- Revision - 11 (Dec.1.2012)**  
 1.change the hole's position located on marble top.



**3 Right View**  
Scale: 1/1"=1"



**4 Section AA**  
Scale: 1/1"=1"

	Designer	Date Origin / Initials	Date Rev/ Initials	Item Description	Dimension	Page	<input checked="" type="checkbox"/> Released for sample approval
	Richard U R	2011-05-12	2012-2-27	Benchwright Console with Double sink	72"x22"x36"H	1 of 2	<input type="checkbox"/> Released for standard production